

# *Colorado Women's Education Foundation*



*2019 Annual Report*

# From the CWEF Board of Trustees

*Colorado Women's Education Foundation's (CWEF) mission is to invest in women who are transforming their lives through education...for themselves, their families, and their communities. Since its inception in 1976, CWEF has provided over 575 women with scholarships totaling more than \$450,000.*

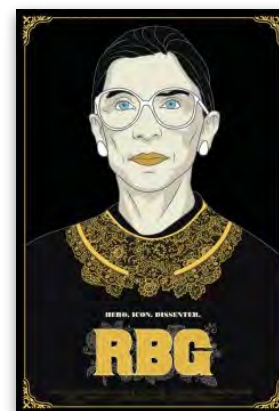
Growth and relationships define CWEF's 2019 fiscal year (June 2018 – May 2019). This 2019 annual report showcases the Foundation's successes and achievements, which include board announcements, new marketing and social media tools, outstanding scholarship recipients, recipient graduations and success stories, powerful fundraising events and networking, and much more. CWEF is pleased to document its significance, value, and responsibility as well as taking the opportunity to express its deep gratitude to our growing tapestry of supporters, donors, sponsors, partners, and volunteers. The Board of Trustees are delighted to share the most significant endeavors accomplished by the Foundation during this past fiscal year.

## **Achelis Foundation donates with a twist!**

CWEF received an exciting donation from the Steven B. Achelis Foundation. In his letter, Steve wrote, *"This year we are again selecting CWEF, but with a twist. This year we are giving \$6,000! However, it is very likely it will have to return to \$3,000 next year."* He restricted these funds for scholarships only and encouraged CWEF to keep up the good work. This is the sixth donation from the Achelis Foundation (double the previous year's donation) for a grand total of \$22,000.

## **BPW Colorado's Feminist Film Fundraiser benefits CWEF**

The Business and Professional Women (BPW) of Colorado hosted their 2nd Annual BPW Day Feminist Film Fundraiser at the Alamo Drafthouse Cinema in Littleton. Tickets were \$22 with half of the proceeds being donated to CWEF. The movie was the surprise box-office hit *RBG: An intimate portrait of an unlikely rock star: Justice Ruth Bader Ginsburg*. CWEF promoted this innovative fundraising opportunity by featuring it on its website and sending out a stylized email campaign to all its former scholarship recipients, donors, and supporters living in the Denver Metro area. Turn out for this amazing movie was high and a total of \$472.50 was raised for CWEF.



## IN THIS ANNUAL REPORT

Contact Us	2	Contributions from 2018-2019	15 - 16
From the CWEF Board of Trustees	2 - 6	Major Contributions in Prior Years	17 - 18
2018-2019 Scholarship Recipients	7 - 8	Major Event Sponsors from 2009-2019	18
Scholarship Application Deadline	8	Financial Statements 2018-2019	19
CWEF Celebrates Scholarship Recipients Graduating	9 - 11		
CWEF Enables Women to Become Financially Self-sufficient	12		
CWEF is Changing the Future of Many Women's Lives	13		
BPW Boulder's Celebration of Women Event Benefits CWEF	14		

Colorado Women's Education Foundation  
P.O. Box 1189 • Boulder, CO 80306 • 303-443-2573  
office@cwef.org • www.cwef.org

2019 Annual Report designed and created by Kevin Reardon

# From the CWEF Board of Trustees

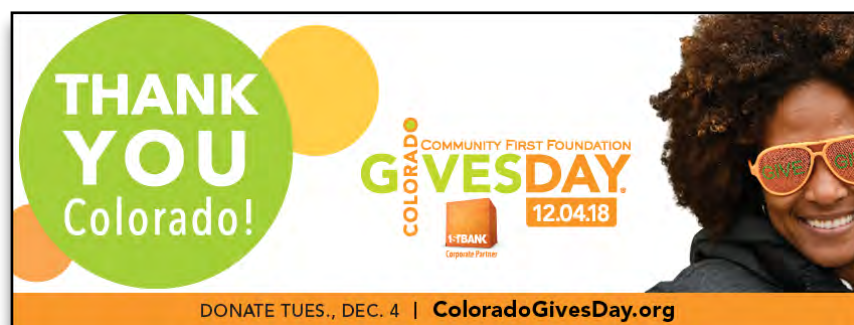
## Participation in our fourth Colorado Gives Day

CWEF has raised more funding each annual Colorado Gives Day (COGives Day) since becoming part of Community First Foundation's nonprofit website listings. For the 2018 COGives Day effort, CWEF set a goal of raising \$35,000, through the generosity of 140 donors, ensuring it could expand its efforts to empower women by helping them achieve economic self-sufficiency through education.

We were on our way when Carol Grever provided a \$10,000 giving pledge that could be announced to others and leveraged as a challenge with other potential donors. In a COGives Day fundraising email campaign, Carol affirmed, *"I'm inspired by the life-changing results of these scholarships and feel a deep connection to CWEF. The recipients' achievements prove the value of a little help at the right time. I'm proud to be a partner in this effort and plan to leverage my donation through Colorado Gives Day to make an even greater impact."* As a Diamond Endowed Scholarship Sponsor, Carol has been supporting CWEF for decades. Through this year's giving pledge, she challenged others to magnify their donation with the COGives Day incentive funds.



Through the generosity of 114 donors, just over \$33,000 was raised for CWEF's meaningful and consequential work on COGives Day! Eight former scholarship recipients donated and five created fundraising pages to raise a total of \$555, which is over half of a scholarship for another woman next year! CWEF thanks all the donors for prioritizing women's education and truly appreciates Carol's continuing financial support.



"I have found that among its other benefits, giving liberates the soul of the giver."

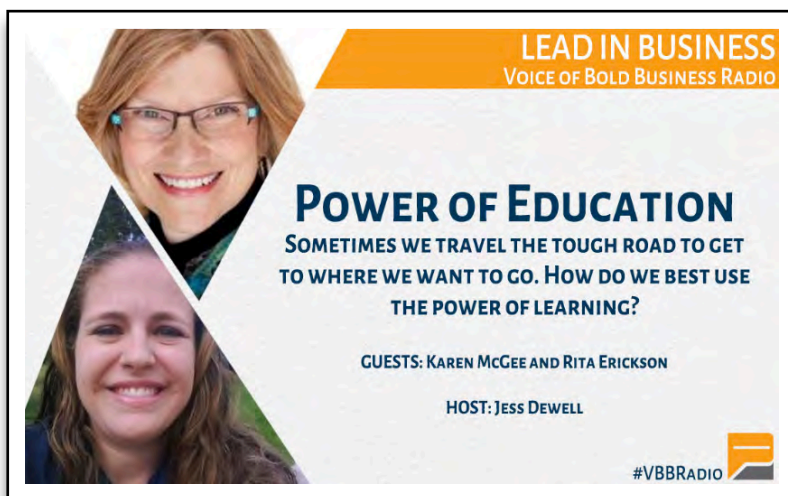
~ Maya Angelou



# From the CWEF Board of Trustees

## Marketing and social media tools

CWEF had the opportunity to be featured and promoted by Jess Dewell, CWEF Trustee, on her Voice of Bold Business Radio show. Karen McGee, CWEF's Board President, and 2017 scholarship recipient, Rita Erickson, were featured in an hour-long interview. Three short, about one-minute, videos were produced entitled: *How Scholarship Recipients Change the World*, *Ways to Support Women to Succeed*, and *How CWEF Supports Women and the Community*. As well, a longer, almost 15-minute video was crafted entitled: *The Power of Education for Women*. All four videos are hosted on CWEF's YouTube channel enabling sharing for many occasions in the future such as: on CWEF's website, in CWEF's profile on Community First Foundation's website, in electronic fundraising emails, in social media postings, and much more. The videos are available for viewing on CWEF's website, [www.cwef.org](http://www.cwef.org), on the "About Us" bar and under "CWEF Media" tab.



## CWEF exhibits and makes contacts

CWEF was one of 100 nonprofit organizations exhibiting, each making a difference for women, at the 2019 Women Powering Change event. This event, held at the EXDO Event Center in Denver, was attended by well over 700 participants. CWEF's action items were to encourage participants to sign up for future announcements about CWEF and its activities, help spread the word about its scholarship opportunity to eligible women, recruit potential new members for the board of trustees, and encourage donations for scholarships and/or to *Partner Up* by setting up a monthly recurring donation to CWEF. In addition to Karen and Roxanne representing CWEF, Vanesa, a 2016 scholarship recipient, attended and proved to be an amazing promoter of CWEF. The evening was considered a huge success and well worth the invested time and energy. Roxanne was also interviewed by Nikki of KGNU Independent Community Radio station out of Boulder.



Left to right:  
Karen, Roxanne, and Vanesa.

# From the CWEF Board of Trustees

## Foundation Board of Trustees

CWEF's collaborative trustees are dedicated to achieving the mission and cause of the Foundation. These intelligent, forward thinking, dedicated, and passionate women work hard and contribute in many ways to help CWEF flourish. As volunteers they bring a wide variety of skill sets and function synergistically. The tangible benefits of all their efforts are demonstrated in the number of women the Foundation is able to assist financially and the amazing achievements of these outstanding scholarship recipients



Left to right:  
Karen, Colleen, Karin, Deb, Jenn, and Jess.



## CWEF Board of Trustees

Karen McGee	President
Colleen Miller	Past President
Deb Fischer	Treasurer
Barbara Ford	Secretary
Jess Dewell	Trustee
Jenn Olson	Trustee
Karin Olson Hoal	Trustee

## CWEF Staff

Roxanne Brickell-Reardon  
Business and Program Manager (halftime)

## Strategic Planning

Trustees continued a strategic planning process, which was begun in 2017, using an Appreciative Inquiry (AI) model. AI uses positive questions to guide its path towards visioning, planning, redirecting, expanding, and energizing an organization's work. The strategic planning meeting began with reviewing and noting progress since the last planning retreat. Discussion was framed in the context of the past, present, and future and was categorized using three strategic plan components including A Powerful & Engaged Board, Dynamic and Committed Donors, and Building on Successes.



# From the CWEF Board of Trustees

## Strategic Planning Continued

Key decisions and outcomes include:

- The board is open to adding men to the board specifically and in favor of trustee diversity in general. The board will maintain a ratio of no less than 60% women and no more than 40% men for both the board and staff.
- CWEF's Board of Trustees will have a three-year board term as a minimum commitment with a potential three-year renewal period.
- The number of scholarships to be awarded yearly will be no less than 20 and this information will be added to the website. The yearly number of scholarships will be decided by trustees based on capacity (i.e., money, administrative resources).
- The amount of each scholarship will remain \$1,000 for now and may be adjusted upward when resources permit.
- Beginning with the new fiscal year, all current and new trustees will be expected to complete a Trustee Engagement Plan outlining their priorities and commitments.

## CWEF bids two trustees farewell

CWEF wants to thank two outstanding trustees, Kim Collie and Holly Paulman, who resigned from their board positions during this fiscal year. Both of these accomplished women made extensive contributions to the board and Foundation during their tenure and will be greatly missed.



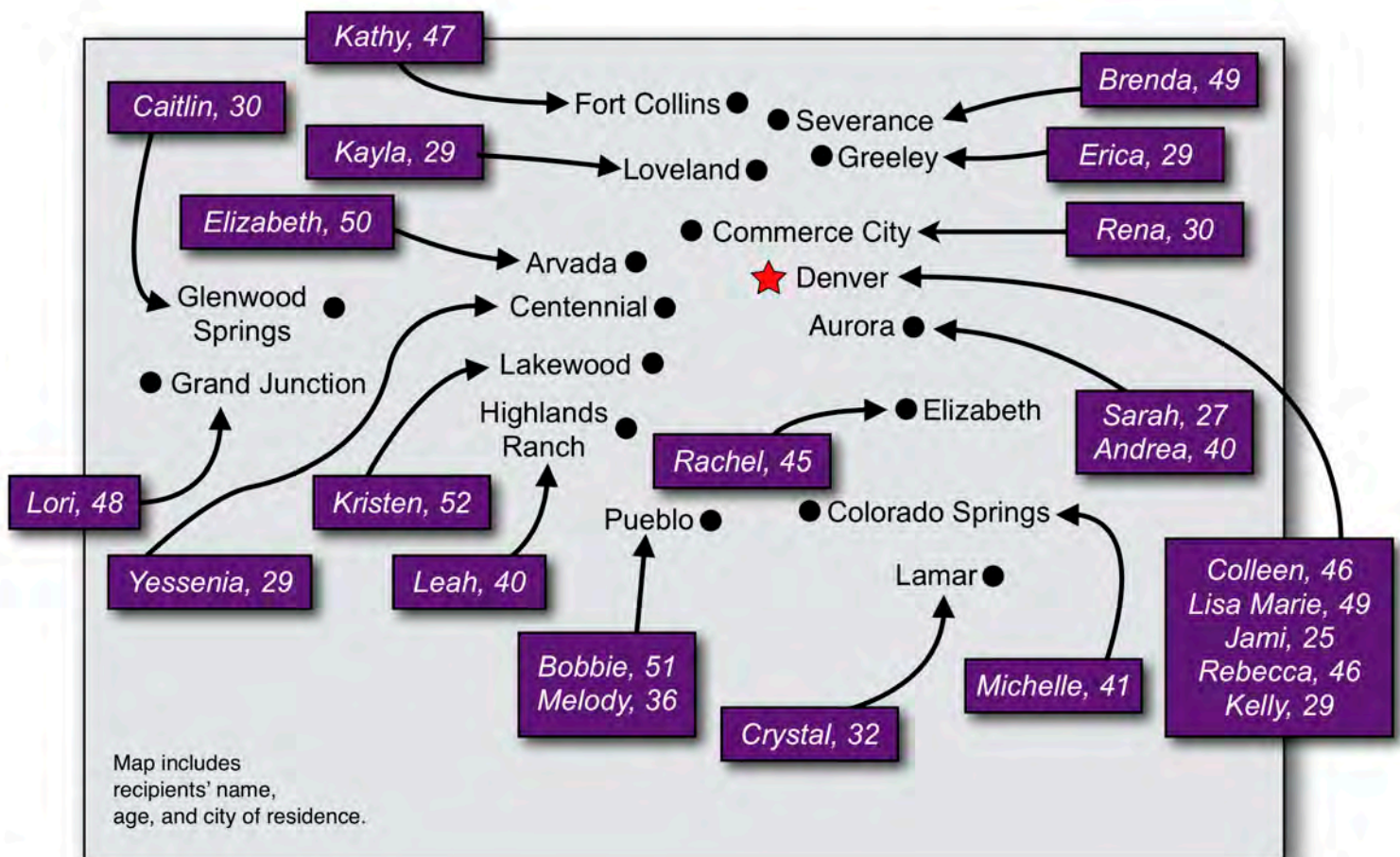
Kim was inspired to apply to be a trustee after hearing the stories of some scholarship recipients who shared that the care and attention they received, in addition to the financial assistance, was special to each of them. She wanted to help make a difference in woman's lives. On June 22, 2018, Kim wrote, *"It is with a heavy heart I must write to say that I am going to need to step down from the CWEF board. The current situation I find myself in does not provide enough space for me to adequately commit to the CWEF cause and still maintain a manageable life-balance."*

Holly was one of the first former scholarship recipients to become a member of CWEF's Board of Trustees. Holly whole-heartedly believes in the mission of the Foundation and committed to working hard to be a positive contributor. When Holly had an opportunity to move her family to Maui, however, she endeavored to make her dream of living in Hawaii come true. On September 9, 2018, Holly emailed, *"Please accept my formal resignation from the CWEF Board of Trustees. It has been a pleasure serving on the board and working with all of the dedicated members. I am so proud of the work CWEF is doing and have no doubt of the positive impact the work has on many lives! Please keep me updated and know I will always be a supporter!"*



# CWEF Provides Scholarships for Women Across Colorado

CWEF awarded \$23,000 in scholarships in fall 2018 to 23 outstanding and high-achieving women. These 2018 scholarships distributed support for 43% of the applicants and provided 23 women more opportunity to pursue economic equity through education and a career. One recipient shares, "By investing in my education you have lifted a financial burden for my family and have created an atmosphere for my children to see that by working hard, anything is possible." Since its inception in 1976, CWEF has provided over 575 women with scholarships totaling more than \$450,000.



Another recipient shares, "I am really grateful for this scholarship—returning to school has been an uphill battle financially. I'm looking forward to a relationship with CWEF throughout my education."

Funds were awarded in the fall to women who applied by the scholarship deadline of May 31, 2018. Applicants must be attending accredited educational institutions of higher learning or vocational training, be at least 25 years old, living in Colorado while earning their certification or degree, and demonstrate academic potential, financial need, career goals, leadership skills, and community involvement.

# Scholarship Recipients during Fiscal Year 2018-2019

The statistics describing these women only tell part of the story, however. The recipients tell CWEF the scholarships help them transcend serious financial constraints, but the most outstanding gift they receive is a sense of pride and emotional support because CWEF is investing in them and their future. Some recipients share that the communication and encouragement they receive from CWEF is equal to or even more significant in value to them than the funding they receive.

The review of each set of scholarship applications continues to be challenging and yet very gratifying for CWEF's Board of Trustees. The trustees review the applications and award scholarships without regard to race, ethnicity, religion, or sexual preference. The selection process is difficult given the number of applications the Foundation receives and the high quality of achievement portrayed by these women. Trustees find it heartening and promising for the future to financially invest in worthy and talented women working towards economic self-sufficiency through education.



## Scholarship Application Deadline

The application deadline is May 31 for fall and spring semester/quarter awards. Applications must be postmarked by the deadline and mailed to CWEF. Scholarship funds awarded by CWEF are applied to the recipient's account at her school.

## Statistically speaking...

### The 23 outstanding and high-achieving women who received awards this year:

- ♦ Were selected from 54 applications,
- ♦ Range in age from 25 to 52 with an average age of 39 years old,
- ♦ Are racially diverse: six of 23 women, or 26%, are racially diverse,
- ♦ May be raising as many as six dependents: 18 of these women are caring for and/or supporting 40 dependents,
- ♦ Serve in the military, one woman is a veteran,
- ♦ Vary in marital status: seven of them are single, 13 are divorced, three are married,
- ♦ Have an average GPA of 3.78 and eight women are maintaining a 4.00,
- ♦ Can be first-generation college students: 12 or 52% of these women are first-gen students,
- ♦ Are in quite varied fields of study including academic advising, accounting, business, communications, counseling, criminal justice, culinary arts, education, geologic engineering, human services, international human rights, medicine, nursing, psychology, and social work with their programs ranging from four women obtaining associates degrees, 12 working towards bachelor's degrees, and seven women earning master's degrees,
- ♦ Attend Arapahoe Community College, Colorado Mountain College, Colorado School of Mines, Colorado State University, Colorado State University Global, Colorado State University Pueblo, Community College of Denver, Kansas State University, Metropolitan State University of Denver, Pueblo Community College, Regis University, University of Colorado – Denver, University of Denver, and University of Northern Colorado.



# CWEF Celebrates Scholarship Recipients Graduating

The graduation of 17 scholarship recipients in fall 2018 and spring 2019 is an extraordinary success story for these high achieving women as well as for CWEF's investment in them. These graduations include five women accomplishing their master's degrees, eight women completing their bachelor's degrees, and four women earning their associates degrees from institutions across Colorado.

As a result of accomplishing their educational goals and completing their degrees, many of these women are beginning new and higher paying jobs. Studies show that when you educate women, they continue to transform their families, their communities, and their society as a whole for the better.

## Fall 2018

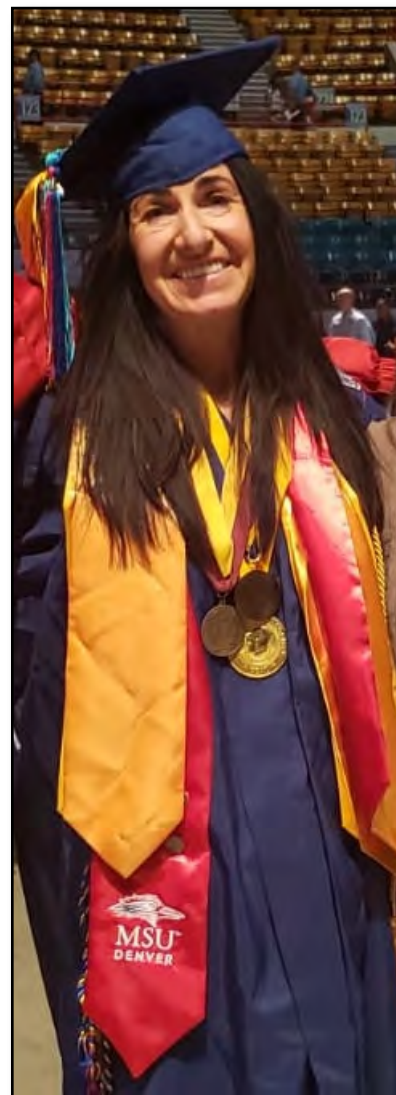
**Yolanda**, an immigrant from Spain, earned her Bachelor of Arts in International Studies with focus in Middle Eastern Studies from University of Colorado – Denver. Yolanda received several scholarships from CWEF while attaining her degree and she graduated Summa Cum Laude.

Obtaining an Associate of Applied Science in Culinary Arts Management from Pueblo Community College, **Bobbie** is currently enjoying her work as a kitchen supervisor.



**Brenda** (above) graduated with her Master of Science in Nursing as an Adult Gerontology Acute Care Nurse Practitioner from University of Northern Colorado.

Graduating with her Bachelor of Science in Human Services with a concentration in Mental Health Counseling from Metropolitan State University of Denver, **Lisa Marie** (right) is currently working as a Wellness Event Specialist at GrowHaus serving some of the poorest regions in Denver. Her work at GrowHaus includes creating healthy events for the community and children and writing grants for the funding. Lisa Marie has been accepted into a master's counseling program, to become a clinical psychologist, at the University of Northern Colorado on the Lowry Campus.



# CWEF Celebrates Scholarship Recipients Graduating

## Spring 2019

Achieving a Master of Arts in Educator Effectiveness, **Tammy** graduated from Western State Colorado University.

Attending Front Range Community College's Brighton campus, **Eliana**, graduated with an Associates of Arts in Business Administration with a certificate in Business Management Basics for Business Specialization.

**Jami** earned an Associate of Science in Physical Therapist Assistant from Arapahoe Community College and she received the Phi Theta Kappa all Colorado Academic Team Award.

**Leah**, who already held an Associates of Arts in Business, attained a Bachelor of Science in Business Management and Human Services Degree with honors from University of Colorado – Denver. You can read her success story on page 12.



**Sarah** (left) was the 2018 recipient of the Aina Holland Freedom Scholarship through CWEF. She graduated in June 2019 with a Master of Arts in International Human Rights with a certificate in Humanitarian Assistance from the Josef Korbel School of International Studies, University of Denver. Sarah was chosen as a Critical Language Scholarship recipient to study Arabic, which is sponsored through the U.S Department of State.

**Lori** completed a Master's in Academic Advising online from Kansas State University. Immediately after graduation she was hired by Colorado Mesa University as an academic advisor directly using her new degree.

“When women are educated, their countries become stronger and more prosperous.”

~ Michelle Obama

# CWEF Celebrates Scholarship Recipients Graduating

## Spring 2019 continued

Obtaining an Associate of General Studies Degree from Pikes Peak Community College, **Michelle** is applying to University of Colorado at Colorado Springs to earn a Bachelor of Health Science with the nutrition option and the end goal of becoming a registered dietitian.

Living in Glenwood Springs and attending Colorado Mountain College, **Caitlin** attained a Bachelor of Arts in Interdisciplinary Sciences with an emphasis in Elementary Education and a Culturally Linguistically Diverse endorsement. She accepted a 3rd grade position at a dual language school right down the street from her house!

**Colleen** pursued a Bachelor of Science in Human Services with an emphasis in Sociology from the University of Northern Colorado.

Attending Pueblo Community College, **Crystal** graduated with a Bachelor in Exercise Science and Associates of Science in Emergency Medical Services with a Paramedic focus. She is completing an internship and preparing for the Paramedic board exam. Once she passes the board she can apply for Firefighter/Paramedic positions with a few local departments.

**Michelle** completed a Bachelor of Arts in Accounting from Regis University.



**Erin** worked towards a Bachelor of Science in Nursing and graduated from the University of Northern Colorado. Following graduation, Erin accepted a position in the surgical department at the Banner Hospital in Ogallala, Nebraska.

**Kristin** (left) graduated with her Master of Social Work from Metropolitan State University of Denver. She shares, *"I so much appreciate CWEF's support. Earning this degree certainly wasn't easy and it was a long four years. I'm a single mom and I worked two jobs. I am going into private practice, so I am definitely putting my degree to good use. That was always the plan and now I have the credential! Thank you so much for all of your support and interest."*

"You are limited only by the level of your desire and determination to succeed."

~ Catherine Tisdale



# CWEF Enables Women to Become Financially Self-sufficient



Leah was born and raised in Malaysia and as a girl, there were no expectations for her to have a higher education. In fact, Leah was the first girl of five in her family to finish high school. After marrying and immigrating to the United States in 2007, Leah and her husband and two daughters moved to Colorado. Leah's husband traveled extensively with his job leaving her to raise their daughters and in 2016 she was divorced and a single mother. Growing up being poor and unsupported, Leah always knew education was her way out of poverty and how she could become self-sufficient. When her youngest daughter was in school all day, Leah enrolled at Arapahoe Community College (ACC).

Leah earned her Associates of Arts in Business from ACC in spring 2017 and then transferred to University of Colorado – Denver (CU-D). In 2018, Leah was recognized with two awards as a part of The Milo Awards celebrating CU-D student leaders, who have displayed an excellence amongst their peers, faculty, and staff. In the Student Government Association category, Leah was recognized as the Outstanding First Year Student out of over 40 members. The second award was Student Leader of the Year with a \$500 scholarship. Leah was selected out of hundreds of nominations from a student body of over 19,000.

Leah received scholarships from CWEF in 2017 and 2018. She confides, *“The scholarships helped me to stay competitive in school by being able to be engaged and hold leadership positions in different organizations, which include the Transfer Student Organization, Golden Key Honor Society, and Business School Dean Student Advisory Council. The financial support also takes away my concern of money and I had the ability to concentrate on my studies. I will be able to graduate with honors - Summa Cum Laude.”*

Leah graduated with a Bachelor in Business Management and Human Services Degree with honors on May 18, 2019. Just prior to graduation, Leah was presented the “Business Partner” Award from CU-D.

In her early forties, Leah is a first-generation college student and has an amazing “can do” attitude. She is proudest of being an outstanding role model for her two daughters, Jessica and Julianna, ages 12 and 17!

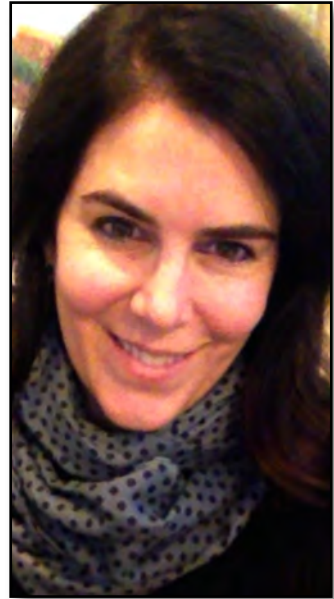
Additionally, Leah was recently hired as an admissions counselor with ACC. Her skills were in such high demand that she was working part time until she completed school and will then work full time for ACC. Leah's future goals include earning a Master's Degree in Public Administration and having a career in higher education, which will enable her to further serve and inspire students.



# CWEF is Changing the Future of Many Women's Lives

Receiving a scholarship can change the future of a woman's life. Sara received a 2014 CWEF scholarship while completing her pre-nursing prerequisites at Aims Community College (ACC). Prior to this time, Sara was struggling as a single mother, diagnosed with two forms of cancer (Hodgkin's lymphoma and papillary carcinoma), financially destitute, and in need of a new career to support herself and her sons.

Her experience with cancer and time in the hospital provided a new perspective on life, which flowered into a passion for the medical field. Her social worker at the Washington Cancer Center proclaimed in his recommendation letter, *"Sara epitomizes perseverance along with the ability to see light at the end of a very long, formidable tunnel. I have no doubt that Sara will be one of those angel nurses whose healing ability goes well beyond her technical skill."* After chemo and two years completing the program at ACC, she was admitted to the 10th best nursing school in the country.



In January 2018, Sara graduated Magna Cum Laude from George Washington University School of Nursing with a Bachelor of Science in Nursing. She passed the national boards and became a registered nurse working in Washington, DC. Sara's other exciting news included her twin sons receiving athletic scholarships to play baseball at Santa Clara University in California. The best news of all, however, is that Sara has been cancer free for five years!

In December 2018, Sara started a new job in Cleveland, Ohio, as a cardiac intensive cardiac unit nurse at the Cleveland Clinic, which is ranked as the second overall best U.S. hospital and their heart and vascular institute is the number one program in the world.

Sara wrote, *"Thank you again CWEF, for helping launch my second career! I am so grateful and will never forget the assistance I received. My plan is to contribute financially to CWEF. I did it! And I'm excited to help other women in Colorado pursue and attain their dreams!"*

CWEF is pleased and honored to continue helping to change the future of more women's lives! Scholarships help women attain a higher level of education so they can be economically self-sufficient and support themselves and their families.



# BPW Boulder's Celebration of Women Benefits CWEF

BPW Boulder again committed to providing CWF with 34% of the proceeds from their always-popular Celebration of Women event. Every year this inspiring event recognizes and honors individuals and organizations that serve their communities to promote full participation, equity, economic self-sufficiency, personal and professional development as well as advocacy for women. This is the third year in a row that BPW Boulder has made this very generous and welcomed commitment to support CWF in providing scholarships to women who seek to improve their lives and the lives of their families through education.

On April 25<sup>th</sup> at Element Bistro in Boulder, BPW Boulder honored four women who served as fine examples of the event's theme, "Women Warriors Taking Action for Change." Among those women warriors was Linda Shoemaker, now a University of Colorado Regent, with a very strong connection to both BPW and CWF in the past. Linda was honored for her long history of "Taking Action for Women," which included, among other contributions, serving as president of BPW Boulder in 1987-1988 and funding a \$10,000 scholarship for CWF through the Brett Family Foundation, which she co-founded with her husband in 2000. Theresa Szczurek, formerly President of the CWF Board of Trustees and now Chief Information Officer and Executive Director of Information Technology for the State of Colorado, submitted the nomination and provided a wonderfully warm introduction for Linda prior to her receipt of the award.



In addition to Theresa and Linda, CWF was well represented at the event. The two recipients of the BPW Boulder scholarships provided by last year's event, Leah and Kathy, were invited to share their stories and used the opportunity to warm and inspire all in attendance. Leah shared, *"BPW Boulder's scholarship helped me stay competitive in school by being engaged through leadership positions in the following organizations: Transfer Student Organization, Golden Key Honor Society, and Business School Dean Student Advisory Council. Your support gave me the push to work harder and finish school on time. I've had the ability to concentrate on my studies and graduate with honors—Summa Cum Laude."*

Kathy affirmed, *"The BPW Boulder scholarship has helped me feel supported and valued. I was thrilled that a group of fantastically successful women believed in my goals so much that they were willing to financially support them."*

*Your belief in me has been empowering and I am so grateful. I can't wait to see how many more women you can help empower with scholarships this next year!"*

Heather, recipient of the previous year's Anita Tamm's scholarship, was also present, this time as a sponsor promoting her own business! Also in attendance: Deb Fischer, CWF Board of Trustees Treasurer and BPW Colorado President; Karen McGee, CWF Board of Trustees President; Jess Dewell, CWF Trustee; and Roxanne Brickell-Reardon, CWF Business and Program Manager.



As a result of BPW Boulder's hard work on this lovely event and their commitment to CWF, they are able to fund two scholarships again this year. Additional donations totaling nearly \$1,000 made during the event were appreciated and will be put towards CWF's mission of investing in women who are transforming their lives through education...for themselves, their families, and their communities.



Left to right: Jess, Roxanne, Leah, Kathy, Heather, and Karen.



# Contributions from June 1, 2018, to May 31, 2019

A sincere thank you to all of our contributors and supporters  
for giving the gift of education during this fiscal year.

## **Contributions of \$12,000 and above**

Carol Grever

## **Contributions of \$6,000 and above**

Stephen B. Achelis Foundation

## **Contributions of \$5,000 and above**

Anchor Point Gift Fund of Bradley A. Feld  
and M. Amy Batchelor  
Phyllis Sharp

## **Contributions of \$4,000 and above**

Anonymous  
Karen McGee

## **Contributions of \$2,000 and above**

Business and Professional Women of Boulder

## **Contributions of \$1,500 and above**

Deborah and Dave Fischer

## **Contributions of \$1,000 and above**

Barb Bashor  
CO Gives Day Incentive Fund  
Colorado Women's Hall of Fame  
Jessica Dewell  
Karin and Brian Hoal  
Elizabeth Michalski in honor of Barb Bashor  
Jenn and Scott Olson

## **Contributions of \$750 and above**

Ronda and Kevin Kelly

## **Contributions of \$500 and above**

Gordon Anthony  
Erwin Buck\*  
Jean Davis  
Marcia Leger-Lovato and Al Smith  
Kelly Naylor  
Kenzi Parton  
Nancy Rinker\*  
Sharon Rusnak  
Levi Strauss & Co. Foundation

## **Contributions of \$400 and above**

Business and Professional Women of Denver

## **Contributions of \$250 and above**

Ball Corporation  
Alicia Bonsett  
Roxanne Brickell-Reardon  
Ryan Dewell  
Charles Parr

## **Contributions of \$200 and above**

20/20 Window Cleaning  
Ann Anthony in honor of Jenn Olson  
Marianne Mitchell  
Tracy Welch

## **Contributions of \$150 and above**

Kathryn Dremann  
Chanel and Travis Heerman  
Hanna Horsch  
Dianne Ladd  
Karen Lussier  
Dana Miller  
Tanya Petty

## **Contributions of \$100 and above**

Dr. Nancy Alexander and David Staat  
Michael Anthony  
Frances August  
Stephanie Bryan  
Jan Castle-Ferrada in memory of  
Zoe Stebbins Castle  
Wendy Conquest  
Linda Farb  
Deborah Fischer\*  
Barbara Flood  
Barbara Ford  
Cheryl Gilchrist  
Claudia Goldin  
Leslie Karnauskas  
Julia Keating in honor of Suki Cupp  
Susan Kurzweil  
Carolyn Lehmann  
Kristin Lentz  
Sara Jo Light  
Teresa McEldowney  
Colleen Miller in honor of Dawn Thompson  
Joyce Neville  
Ruth Nutter

# Contributions from June 1, 2018, to May 31, 2019

## Contributions of \$100 and above continued

Rebecca Roetto  
Marlene Shannon  
Jim and Sue Swanson  
Theresa Szczurek in honor of Jane and Rob Smith  
Don Toups and Rina Coury  
Don and Karen Wood

## Contributions of \$50 and above

Anonymous in honor of Dr. Patricia Madden  
Anonymous in honor of Karen McGee  
Aurora Business and Professional Women  
Gabriella Arritola  
Lisa Berquist  
Molly Briggs  
Defenders  
Phyllis Dwyer  
Jennifer Garner  
Grassroots Landscape Inc.  
Maxine Green in honor of Brandy Stewart  
Nancy Ewing  
Jill Fellman  
Susan Haskins  
Connie Herschbach  
Carol and Mike Hicks  
Linda Jackmond in honor of Barbara Ford  
Nikki Kayser  
Kathy and Jimmie Kelly\*  
Lanny Larson and Lynne Rodriguez in honor of  
Jones LeFae  
Jones LeFae in memory of Gilbert Rodriguez  
Nancy Litvak  
Heather Lonergan  
Becky Maurer  
Maura O'Neal  
Holly Paulman  
Mary Dana Schnorr  
April Simmons in honor of Sheila Fortune  
Kathy Smith and Steve Gebhart  
Rita Smith  
Barbara Southern  
The Mendelsons  
Elizabeth Ward  
Melissa Wilson

## Additional Contributions

Anonymous in honor of Frank Bohenick  
Anonymous in honor of Karen McGee  
Salita Biddix  
Karen Boelts  
Harriet K. Boonin  
Patricia Brennan  
Rena Burk  
Nancy Chin-Wagner  
Bonnie Custer  
Susan Duguid in memory of Lori and  
Sandra Duguid  
Brickell Wubben Family in honor of Will  
and Jan Brickell  
Angela Durlin  
Mike Flood  
Beverly Gavel in honor of Barbara Ford  
Tom Gieck  
Lisa Marie Gulbenkian-Fertman  
Heidi Halus in memory of Patricia Halus  
Wendy Hanophy  
Kathleen Hildreth  
Brenda Kanter Stern  
Beth Kieft in honor of Barbara Ford  
Ryan and Julie Lambert  
Angela Madura  
Eliana Martinez  
Carol Miller  
Jacolyn Peebles  
Jan Pelton in honor of Mavis Little  
Susan Oakes in honor of Barbara Ford  
Sherry Rubinstein  
Kristin Scott  
Gayle Semler  
Megan Shellman  
Christine Sigala  
Sharon Simmons  
Anne Steinbeck  
Gianna Sullivan  
Marianne Swayze  
The Minerva Group-Lisa Isom  
Yolanda Valencia

\* In memory of Aina Holland

# Major Contributions in Prior Years

Our major supporters in prior years formed the bedrock of this Foundation.

## **Diamond Endowed Scholarship Sponsor \$169,000 and above**

Carol Grever

## **Endowed Scholarship Sponsors \$50,000 And above**

The Anchor Point Fund  
(Brad Feld and Amy Batchelor)

## **Endowed Scholarship Sponsors \$25,000 and above**

Asset One/Financial Architects, Erwin Buck  
and Nancy Rinker  
Anthem BlueCross BlueShield Foundation  
Business and Professional Women State  
Presidents  
Theresa M. Szczurek, Ph.D., Technology &  
Management Solutions

## **Named Scholarships \$22,000 and above**

Steven B. Achelis Foundation

## **Named Scholarships \$10,000 and above**

Arthur Andersen  
Boulder Business and Professional Women  
Brett Family Foundation  
Helen Scott Calais  
Coldwell Banker-The Bernardi Group  
Eloise Witt Joder Memorial  
Dain Rauscher  
Daniel Aaron Romero Memorial  
Anne F. Steinbeck  
U.S. West Foundation  
Wells Fargo  
Women in International Business  
Yampa Valley Women's Pioneer

## **Named Scholarships \$5,000 and above**

Barb Bashor  
Alice DeBoer by Marion McDonald

## **Past Lifetime Sponsors \$1,000 pledge completed**

The 1996-97 Business and Professional Women  
State Executive Committee  
American Express/IDS  
DeWalt H. Ankeny, Jr. Fund of the Minneapolis  
Foundation  
Ball Aerospace

Boulder Business and Professional Women  
Boulder Planet  
The Carr Family  
Helen Scott Calais  
Nancy Cebula  
Colorado Federation of Business and  
Professional Women  
Denver Tech Center-Colorado Business  
Women Network  
Alice DeBoer  
The Estate of Cecilia G. Gillespie  
Cooley Godward  
Kathryn Hach  
Barbara Ihde  
Leslie Karnauskas  
Pam McKinnie, Concepts Unlimited  
Judi S. and Robert C. Newman  
LeRae Orullian  
Donna Rifley  
Carolyn Romero  
Barbara and John Rosenberg  
Anne F. Steinbeck  
Cynthia Vaida  
Melissa W. Wilson  
Judy A. Wolff

## **Past Pledging Scholars \$1,000 pledged**

Cathi Almquist  
Anonymous donor  
Ronda Bolich-Lampo  
Carolyn Butler  
Corrin Campbell  
Pam Dumonceau  
Barbara Ann Ford  
Dianne Green  
Ida Halasz  
Aina Holland  
Nancy Jarrell, Enterprising Communications  
Evelyn Jeffries  
Eva Kosinski  
Stephanie Nestlerode, Omega Point  
International  
Kris O'Shea  
Kathy Pear  
Julia and Jerry Rudy  
Janet L. Stull  
Mary Tinkcom



# Major Contributions in Prior Years

Barbara Truan, Renaissance Management  
Joyce Waters-Smith  
Gaynelle Winograd  
Judy Wolff  
Kathryn Zwack

## **Other Contributions**

Anonymous – In honor of Marion  
Dorothy Yost  
Sandra L. Bish - In honor of Eleanor Hubbard  
Anne F. Steinbeck - In honor of 90 years of  
Business Professional Women/CO and  
outgoing President Cheryl Ide  
Anne F. Steinbeck and Carolyn Romero -  
In honor of Janet Canaan and 2009-10  
Executive Committee  
SagePoint Financial, Inc. - In recognition of  
Top Sales Leader, Erwin Buck

“Be grateful for what you already have  
while you pursue your goals. If you  
aren’t grateful for what you already  
have, what makes you think you would  
be happy with more.”

~ Roy T. Bennett

# Major Event Sponsors from 2009 - 2019

## **Sponsors of \$22,000 and above**

Agrium, Inc.

## **Sponsors of \$2,000 and above**

Davis Graham & Stubbs LLP  
Ganette Isaacson and TCF Bank  
Noble Energy, Inc.

## **Sponsors of \$1,500 and above**

Barb Bashor and The Bashor Connection  
Holland & Hart LLP  
Joyce and John Neville

## **Sponsors of \$1,000 and above**

John Atencio  
M.T. Casey  
Deb and Sander Orent and Medically Based  
Fitness  
Cynthia and Tony Vaida  
Melissa Whitmer and Commerce Bank

## **Sponsors of \$500 and above**

Aspen Kitchen  
Coldwell Banker Residential Brokerage  
Joy and Chris Jordan  
Ronda and Kevin Kelley  
Mount Vernon Country Club  
Orion Medical Management  
Thomson Reuters

## **Sponsors of \$200 and above**

A Spice of Life  
Amber and Mike Fries  
American Solutions for Business  
Denver Integrated Plastic Surgery  
Gartner, Inc.  
Red Direction  
Wendy Reynolds and Flatirons Bank  
RustProof Labs LLC  
Verizon

# Financial Statements 2018-2019

Colorado Women's Education Foundation for the Fiscal Year ending May 31, 2019

## Statement of Activities - Cash Basis

### Revenues

Donations - Business and Professional Women	2,702.51
Donations - Individuals	15,087.00
Donations - Memorial	650.00
Donations - Corporations and Foundations	8,655.90
Fundraising Events	3,769.00
Colorado Gives Day Donations	33,585.79
Dividends/Investment Income	6,427.40
Interest Income	69.17
Realized Gain on Investment	1,922.72

<b>Total Revenues</b>	<b>72,869.49</b>
-----------------------	------------------

### Expenses

Computer Expenses/Website	813.24
Database Management	718.75
Depreciation/Amortization	3,620.24
Dues/Meetings/Memberships	625.00
Education/Training	750.00
Financial Management Fees	2,858.10
Fundraising Expenses	3,642.36
Insurance	1,725.00
Licenses and Fees	30.00
Miscellaneous	375.00
Office Payroll	27,235.26
Payroll Taxes	2,083.37
P.O. Box and Postage	245.47
Professional Services/Accounting	2,121.55
Supplies/Printing	349.32
Telephone	234.61

<b>Total Operating Expenses</b>	<b>47,427.27</b>
---------------------------------	------------------

Scholarships	23,000.00
--------------	-----------

<b>Total Expenses</b>	<b>70,427.27</b>
-----------------------	------------------

<b>Net Operating Revenue</b>	<b>2,442.22</b>
------------------------------	-----------------

<b>Other Revenue</b>	<b>(8,774.66)</b>
----------------------	-------------------

<b>Net Revenue</b>	<b>(6,332.44)</b>
--------------------	-------------------

## Statement of Financial Position - Cash Basis Assets

### Current Assets

FirstBank Checking	3,752.33
FirstBank Savings	48,008.16
Endowment Fund-Wells Fargo	378,390.46
PayPal	31.26
CWEF Database	7,500.00

<b>Total Current Assets</b>	<b>430,182.21</b>
-----------------------------	-------------------

### Fixed Assets

Computer and Printer	5,665.34
Accumulated Depreciation	(5,665.80)
Accumulated Amortization	(4,584.00)

<b>Total Assets</b>	<b>433,097.75</b>
---------------------	-------------------

## Liabilities and Net Assets

### Current Liabilities

FICA	680.72
Medicare	159.18
FWIT	396.00
SWIT	177.00

<b>Total Current Liabilities</b>	<b>1,412.90</b>
----------------------------------	-----------------

### Net Assets

Net Assets	438,017.29
Operating Income	2,442.22
Variable Gain/Loss	(8,774.66)

<b>Total Net Assets</b>	<b>431,684.85</b>
-------------------------	-------------------

<b>Total Liabilities and Net Assets</b>	<b>433,097.75</b>
---	-------------------

CWEF's assets include a checking and savings account as well as an investment account held and managed by Wells Fargo Advisors, LLC, an endowment fund that is held in the form of stocks and mutual funds providing a variable income. The CWEF Board of Trustees has protected this endowment, which has been contributed to by many, many supporters over the years, to preserve its legacy ensuring the Foundation will continue into the future.

During fiscal year 2018-2019, CWEF revenues include over \$27,000 in donations from individuals, corporations, and foundations. The CWEF Board of Trustees conducted several small house parties raising almost \$4,000. Additionally, almost \$34,000 was raised during CWEF's participation in its fourth Colorado Gives Day in December 2018. These revenues made it possible to fund 23 scholarships for women totaling \$23,000. Operating expenses include professional services and a half-time business and program manager.

